

MegaBall® / MegaBall® 2 Megapixel IP Cameras

1.3–5MP H.264 All-in-One Motorized P-Iris Lens or Manual Lens Day/Night Indoor IP Cameras with Optional Wide Dynamic Range (WDR) or 5MP H.264 All-in-One Manual Panomorph Lens Day/Night Indoor IP Camera



Wall/Ceiling Mount

Surface Mount (Light Gray)

Flush Mount

All-in-One Solutions – MegaBall® / MegaBall® 2 with Adjustable Wall Mount or Recessed and Surface Mount Dome

Stylish MegaBall® multi-megapixel cameras provide ample resolution to zoom-in for details in live or recorded video. These indoor all-in-one solutions integrate a 1.3, 1080p, 3 or 5-megapixel camera with fast frame rates and a choice of a 3.3–10mm vari-focal manual lens or a remote focus/zoom P-iris lens with an adjustable wall mount or flush and surface mount dome housing. An optional ImmerVision Enables® panomorph system offers 180° and 360° views. H.264 compression reduces network bandwidth and storage requirements while delivering full frame rates and full resolution without sacrificing image quality. Day/Night functionality allows for 24-hour surveillance. Wide Dynamic Range (WDR) up to 100dB at full resolution balances light and dark areas in the same scene (1080p and 3MP). Binning mode for increased low light sensitivity is available for 3MP and 5MP cameras.



Image from a 5MP MegaBall® camera

Features Included:

- Remote Focus/Zoom P-Iris Lens (PM Models)
- P-Iris Control to Get Best Depth of Field and Image Clarity (PM Models)
- Optional True WDR up to 100dB at Full Resolution Available on Some 1080p and 3MP Models: See Clearly in Shaded and Bright Light Conditions Simultaneously
- Integrated ImmerVision Enables® Panomorph Solution for 180° and 360° Field of View (DN-01 Models)
- Light Gray and Black Dome Options
- Casino Mode™ Maintains Continuous 30fps Frame Rate Required by Gaming Industry Regulations (AV2145 and AV2245 Models)
- Binning Mode for Strong Low Light Performance on 3MP and 5MP Resolutions
- True Day/Night Functionality with Mechanical IR Cut Filter (DN Models)
- Tamper-Resistant Housing
- Integrated Microphone and Audio Out (-A Models Only)
- Installer Friendly Cable Management, 3-Axis Adjustment, In-Ceiling and Surface Mount Dome
- PoE and Auxiliary Power: 12–48V DC/24V AC
- Dual Encoder H.264/MJPEG
- Privacy Mask, Motion Detection, Flexible Cropping, Bit Rate Control, Multi-Streaming and Forensic Zooming
- Fast Frame Rates
- PSIA Conformant



Integrated Motorized Lens with Remote Focus/Zoom (PM Models)



P-Iris Control for Best Depth of Field and Image Clarity (PM Models)



Panomorph Lens (-01 Models)



All-in-One Ball Solution



Integrated Microphone (-A Models)



True Day/Night with IR Cut Filter



Pixel Binning Mode on 3 and 5MP Models



Wide Dynamic Range Available on Some 1080p and 3MP Models



Casino Mode™ Maintains at Least 30fps on AV2145 and AV2245 Models



Dual Encoder H.264/MJPEG



Wide Field of View



Telephoto Field of View

Forensic Zooming

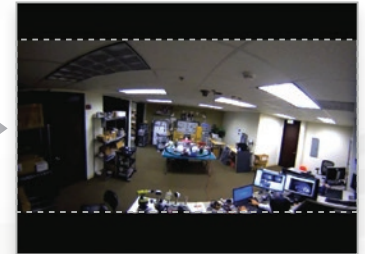
Arecont Vision MegaBall® megapixel cameras deliver outstanding resolution to capture significant detail whether viewing live or recorded/archived video. With the ability to digitally Pan-Tilt-Zoom (PTZ) images, you can view the details you need to see at any time, such as license plates, faces and other objects of interest. The superior resolution of MegaBall® megapixel cameras along with their varying fields of view allows them to do the work of multiple conventional cameras and provide critical forensic information—all without the need and associated expense of system operators having to “catch” activities of interest as they occur.

Panomorph Lens Option

MegaBall® 2 offers an optional close proximity panoramic view through the use of an ImmerVision Enables® panoromorph lens and software system. Available with a 5MP sensor, the elliptical panoromorph image is dewarped to provide 180° or 360° views with impressive resolution. In comparison, images from fisheye lenses lose more resolution when dewarped. MegaBall® 2 with the panoromorph system is an alternative to Arecont Vision SurroundVideo® 180° and 360° models when the camera will be mounted close to the subject.

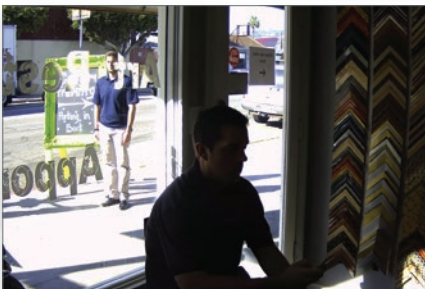


Original Fisheye Panomorph Image

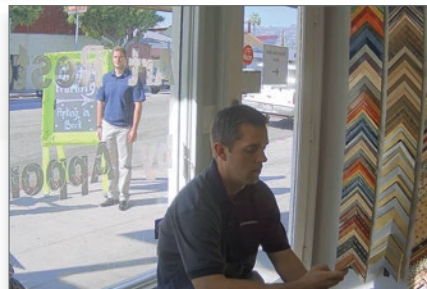


Dewarped Panomorph Image

MegaDynamic® Wide Dynamic Range (WDR)



Megapixel image without WDR



Megapixel image with WDR

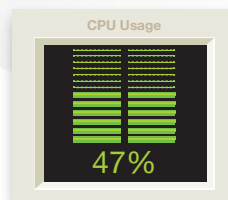
Users can achieve clear images in extreme lighting conditions with MegaBall® WDR cameras in resolutions of 1080p and 3MP. Wide Dynamic Range up to 100dB at full resolution balances light and dark areas in the same scene, such as in the lobby of an office building with large windows, the loading dock at a distribution facility or many retail environments.



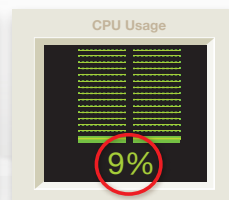
Wall Mount

Ease of Installation

MegaBall®'s unique bracket design encloses all cables, providing better protection from tampering and a more professional installation. The P-iris, remote focus/zoom lens of MegaBall® 2 allows installers to remotely configure the camera.



2MP with live video in MJPEG



2MP with live video in H.264

Compliant H.264 Compression

MegaBall®'s compliant implementation of H.264 allows full frame rates and full resolution without sacrificing image quality. With bit rate control, the CPU load is decreased at both the client (decompression) side and the server/storage side, allowing lower bandwidth and storage relative to MJPEG. Real Time Streaming Protocol (RTSP) allows for compatibility with media players such as Apple QuickTime®, VLC and others.



Flush Mount with Audio

Audio Out with Integrated Microphone

An integrated microphone on some MegaBall® and MegaBall® 2 Panomorph models eliminates the need to install separate audio connectors on site and may be disabled.

MegaBall® / MegaBall® 2 Megapixel IP Cameras

User-Friendly Web Interface: Focus, Zoom, P-Iris Control

For easy installation, remote focus and remote zoom can be done through the camera webpage (MegaBall® 2). Just click “short range focus” or “full range focus” to get a clear image through the dome bubble. The added P-iris functionality provides better depth of field in varying lighting conditions.

Additional Benefits Include:

- Fine tuning for a better image after installation
- Quicker installation for lower total cost of ownership (TCO)
- P-iris is designed to provide the maximum depth of field in any lighting condition to ensure the best possible image quality



Enhanced Low Light Performance



Day Mode



Night Mode

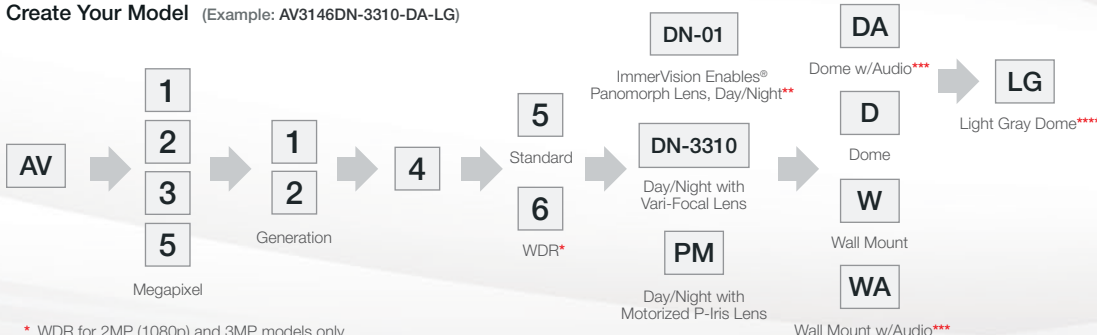
As part of their superior Day/Night operation, MegaBall® cameras include low light enhancing technology such as pixel binning and adaptive noise-cancellation.

Product Comparison



Series	Model	Sensor	Full Resolution	Max Frame Rate @ Full Resolution	Minimum Illumination	Lens	Day/Night	WDR	Audio Option	Motorized P-Iris Lens	Panomorph Lens	Binning Mode	Casino Mode™
MegaBall® 2	AV2245	1080p	1920 x 1080	31fps	Color: 0.1 Lux B/W: 0 Lux, IR Sensitive	3–10mm, 1/2.7", F1.3, RZ, RF, P-iris, H-FOV = 117°–36°	•			•			•
	AV2246	1080p	1920 x 1080	30fps	Color: 0.3 Lux B/W: 0 Lux, IR Sensitive	3–10mm, 1/2.7", F1.3, RZ, RF, P-iris, H-FOV = 81°–26°	•	•		•			
	AV3245	3MP	2048 x 1536	21fps	Color (Non-Binning): 0.3 Lux Color (Binning): 0.15 Lux B/W: 0 Lux, IR Sensitive	3.4–10mm, 1/2.5", F1.4, RZ, RF, P-iris, H-FOV = 81°–28°	•			•		•	
	AV3246	3MP	2048 x 1536	21fps	Color (Non-Binning): 0.3 Lux Color (Binning): 0.15 Lux B/W: 0 Lux, IR Sensitive	3–10mm, 1/2.7", F1.3, RZ, RF, P-iris, H-FOV = 86°–28°	•	•		•		•	
	AV5245	5MP	2592 x 1944	14fps	Color (Non-Binning): 0.3 Lux Color (Binning): 0.15 Lux B/W: 0 Lux, IR Sensitive	3.4–10mm, 1/2.5", F1.4, RZ, RF, P-iris, H-FOV = 102°–35° 0.98mm (Short Axis), 1.12mm (Long Axis) F2.0, H-FOV = 182°	•		•	•	•	•	
MegaBall®	AV1145	1.3MP	1280 x 1024	42fps	Color: 0.1 Lux B/W: 0 Lux, IR Sensitive	3.3–10mm, 1/2.5", F1.6, H-FOV = 61°–21°	•						
	AV2145	1080p	1920 x 1080	31fps	Color: 0.1 Lux B/W: 0 Lux, IR Sensitive	3.3–10mm, 1/2.5", F1.6, H-FOV = 90°–31°	•		•				•
	AV2146	1080p	1920 x 1080	30fps	Color: 0.1 Lux B/W: 0 Lux, IR Sensitive	3.3–10mm, 1/2.5", F1.6, H-FOV = 73°–26°	•	•					
	AV3145	3MP	2048 x 1536	21fps	Color (Non-Binning): 0.3 Lux Color (Binning): 0.15 Lux B/W: 0 Lux, IR Sensitive	3.3–10mm, 1/2.5", F1.6, H-FOV = 75°–25°	•					•	
	AV3146	3MP	2048 x 1536	21fps	Color (Non-Binning): 0.3 Lux Color (Binning): 0.15 Lux B/W: 0 Lux, IR Sensitive	3.3–10mm, 1/2.5", F1.6, H-FOV = 78°–28°	•	•	•			•	
	AV5145	5MP	2592 x 1944	14fps	Color (Non-Binning): 0.3 Lux Color (Binning): 0.15 Lux B/W: 0 Lux, IR Sensitive	3.3–10mm, 1/2.5", F1.6, H-FOV = 95°–32°	•		•			•	

Create Your Model (Example: AV3146DN-3310-DA-LG)



Build-to-Order Options

DN-01	ImmerVision Enables® Panomorph Lens, Day/Night
DN-3310	Vari-Focal Lens w/ Day/Night
PM	Motorized Remote Focus/Zoom P-Iris Lens w/ Day/Night
-W	Wall Mount Model
-D	Surface/Flush Dome Model
A	Audio OUT + Integrated Microphone
LG	Light Gray Dome Housing

* WDR for 2MP (1080p) and 3MP models only

** Panomorph only available at 5MP

*** Audio only available in some first generation MegaBall® configurations and MegaBall® 2 Panomorph

**** Light gray color only available for dome models. Models without "LG" come standard in black



MegaBall® / MegaBall® 2 Megapixel IP Cameras

Configurations

*All dome models can be configured with or without a dome bubble



Wall/Ceiling Mount
(-W)



Surface Mount*
(-D)



Flush Mount*
(-D)



Surface Mount*
(-D-LG)



Flush Mount*
(-D-LG)

Accessories

D4S-WMT-B

Wall Mount Adapter
¾" NPT Standard



D4S-WMT

Wall Mount Adapter
¾" NPT Standard



SV-JBA

Junction Box Adapter



D4S-CMT-B

Pendant Mount Adapter
¾" NPT Standard



D4S-CMT

Pendant Mount Adapter
¾" NPT Standard



SV-EBA

Electrical Box Adapter



Global Sales and Support

Arecont Vision is the leading manufacturer of high-performance megapixel IP cameras and associated software. All Arecont Vision cameras are made in the USA.

North America

Los Angeles, USA

Arecont Vision, LLC. Headquarters
425 E. Colorado St., 7th Floor
Glendale, CA 91205, USA

Phone: +1.818.937.0700
Toll Free: 877.CAMERA.8
Fax: +1.818.937.0464

Sales

Phone: +1.818.937.0700 x 3
Email: avsales@arecontvision.com

Support

Phone: +1.818.937.0700 x 1
Email: support@arecontvision.com

South America

Latin America

Email: latam.sales@arecontvision.com

EMEA

Frankfurt, Germany

Arecont Vision Europe GmbH
Lyoner Straße 38, 5th Floor
60528 Frankfurt, Germany

Phone: +49.69.6953.4600
Email: europe.sales@arecontvision.com

Moscow, Russia

CJSC Arecont Vision
121351, Russian Federation, Moscow, 58/1, Molodogvardeiskaya str.

Phone: +7.495.649.0577
Fax: +7.495.221.5227
Email: info@arecontvision.ru

Middle East

Email: mena.sales@arecontvision.com

Africa

Email: africa.sales@arecontvision.com

APAC

Shanghai, China

Resident Representative Office of Arecont Vision, LLC
in Shanghai
Taolin Road No. 18, Building A
World Plaza, Room #1603
Pudong New District, Shanghai, 200135
P.R.China

Phone: +86.21.6176.2596
Alt. Phone: +86.21.6176.2597
Fax: +86.21.6085.2520
Email: apac.sales@arecontvision.com